

HIGH RESOLUTION SCANNING SONAR

ECHOLOGGER RS900

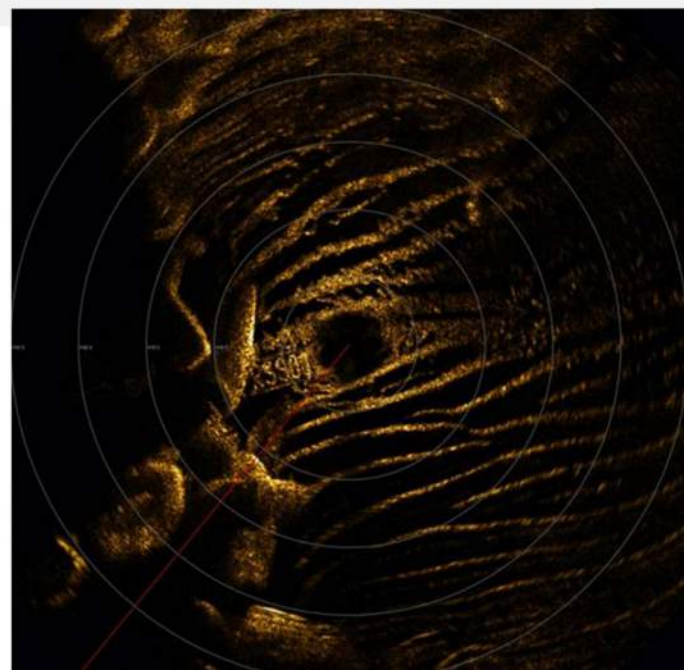


APPLICATIONS

- Search & Recovery
- Navigation for ROV/AUVs
- Mine detection
- Harbor security
- Scour monitoring

FEATURES

- Real time underwater imaging using acoustics
- High resolution images with a piezo-composite broadband transducer
- Motion sensing using Compass & Gyro.
- High scanning speed
- Full 360° scan & Sector scan
- Digital CHIRP technology
- Non-contact rotational scanning mechanism
- Easy deployment



SPECIFICATION

Pulse	CHIRP & CW
Driving Freq.	900 kHz
Beam Angles	H0.8°, V30.0°
Max. Range	60m
Range Resolution	15 mm @50kHz , 7.5 mm @100kHz sampling
Rotational Contact	Noncontact Transformer
Angle Resolution	0.1125°, 0.225°, 0.45°, 0.9°, 1.8°
Max. Scanning Speed	4sec @ 5 m, 0.9°
Transmitting Pulse Length	512 us (CHIRP), 10 - 100us (CW)
TVG	60 dB
Gain Control	-30 dB ~ +30 dB
Interface MRS	RS232 / RS485 up to 3Mbaud
Motion Compensation	Enabled using Compass & Gyro.
Power Supply	12 - 72 VDC, 6W Max
Data Transmission	2 Mbaud @300m , 115200 baud @1 km
Connector	SUBCONN MCBH4M (MCBH8M)
Depth Rate	1000 m
Material	Al (Hard Anodised)
Dimensions	Dia. 140 mm, Height 120 mm
Weight	2.6 kg(air) / 0.9 kg(water)
