

# ARIS EXPLORER 1200

*SEE WHAT OTHERS CAN'T*

## APPLICATIONS:

- ◆ Fisheries Management
- ◆ Target Detection
- ◆ Search and Recovery
- ◆ Environmental Monitoring

## IDENTIFICATION FREQUENCY:

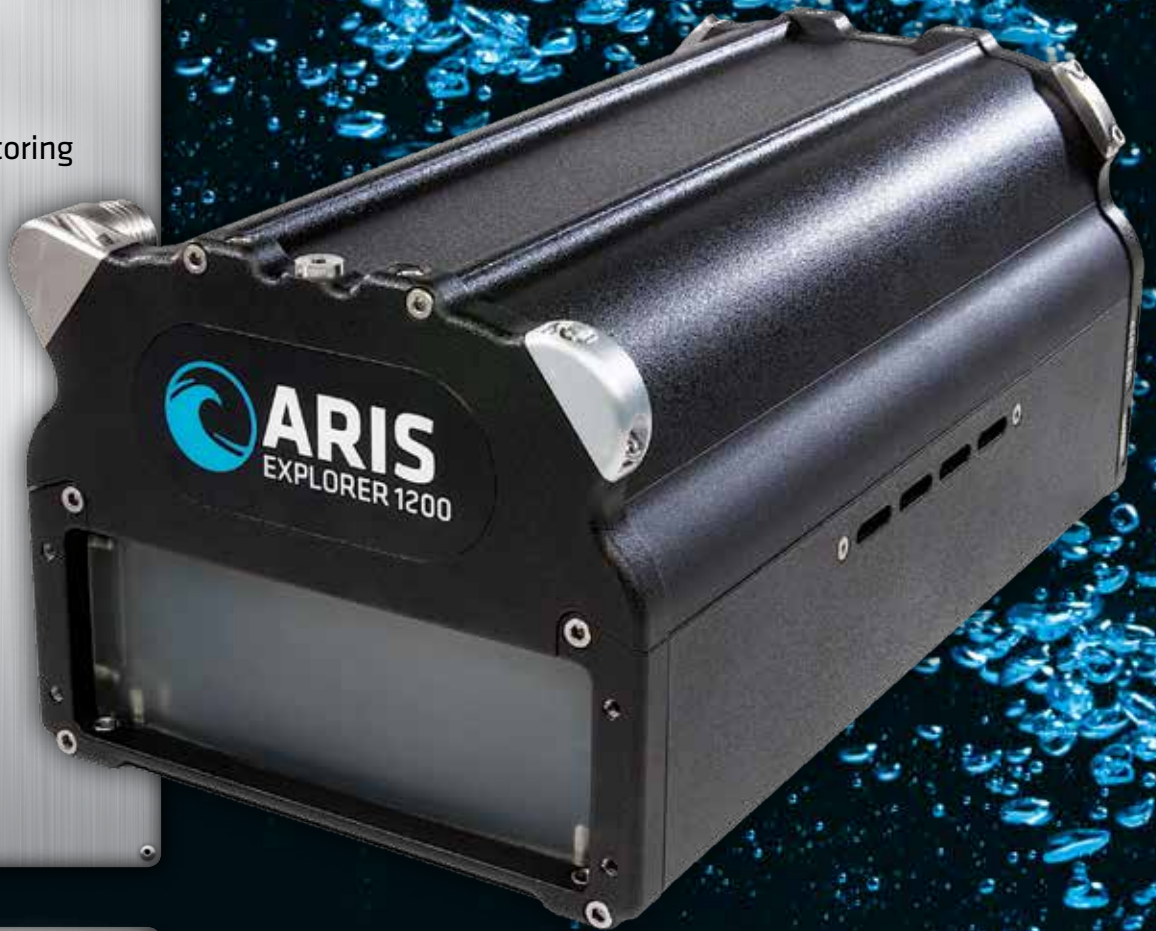
**1.2 MHz**  
35m Range

## DETECTION FREQUENCY:

**0.7 MHz**  
80m Range

## DEPTH RATING:

**300m**



**DIDSON Technology**

## The Next Generation in Clarity

The ARIS Explorer 1200 delivers image clarity that is unmatched by any other sonar in its class. At 1.2MHz frequency, the Explorer 1200 provides excellent detail for target acquisition or inspection up to 35 meters. At the available lower frequency of 0.7MHz, the ARIS Explorer 1200 allows target detection up to 80 meters. The near-video quality images are presented through powerful yet innovative software. The ARIS Explorer 1200 is well suited for fisheries management and marine biology research by delivering vital detail even during turbid conditions in real time with multiple time record options. Offering effective background subtraction algorithms to help distinguish between fish and debris, the ARIS is an ideal tool for a variety of fish studies and management tasks. Teamed with the available ARIS Rotator AR<sub>2</sub>, the sonar can be easily and accurately aimed and allows for pan/tilt or tilt/roll.



## FEATURES:

- ◆ Dual Frequency, 1.2 MHz & 0.7 MHz
- ◆ High-Definition Imagery
- ◆ Capable of imaging at close range
- ◆ Dynamic Focus
- ◆ Built in compass & depth gauge
- ◆ Compact & lightweight
- ◆ Low Power Requirement
- ◆ Easy Integration
- ◆ Ethernet Interface
- ◆ Windows™ based Software

Founded in 2002, Sound Metrics Corp. was the first company to introduce a high-frequency imaging sonar to the commercial market. The DIDSON brand of imaging sonars set a new standard for excellence in underwater vision in black and turbid waters. The company recently launched the next generation of DIDSON, with the release of the ARIS brand of high-resolution and high definition imaging sonars. With the ARIS Explorer product range, Sound Metrics once again sets a new standard for imaging at extremely close ranges in all types of water.

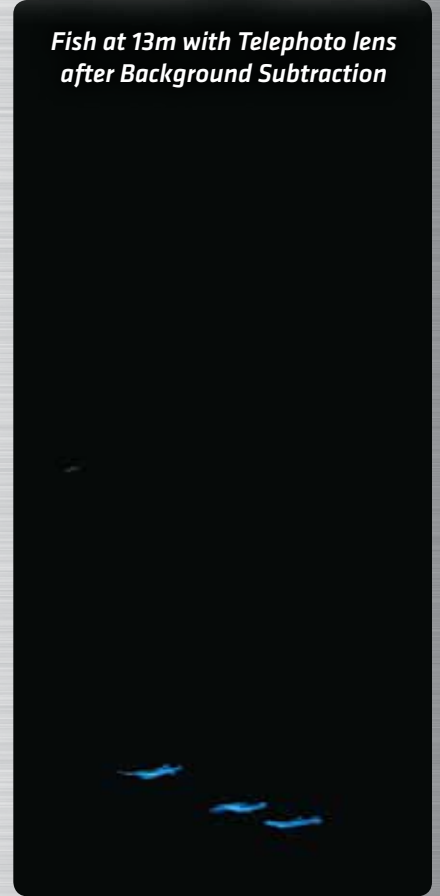
Sound Metrics strives to offer the most advanced technology along with the best support and most innovative solutions around your applications

# ARIS EXPLORER 1200

*Fish at 13m with Telephoto lens*



*Fish at 13m with Telephoto lens after Background Subtraction*



## SPECIFICATIONS:

Number of Transducer Beams	48
Beam Width	0.6°
Field-of-view	28° x 14°
Frame Rate	Up to 15 frames/sec
Range Resolution	Down to 3mm
Power Consumption	20 Watts typical
Weight in Air	5.9 kg
Weight in Water	1.06 kg
Dimensions	31cm x 17cm x 14cm
Cable Length	Up to 150m



[soundmetrics.com](http://soundmetrics.com)

425-822-3001 | [sales@soundmetrics.com](mailto:sales@soundmetrics.com)

PART #015337 | REV A