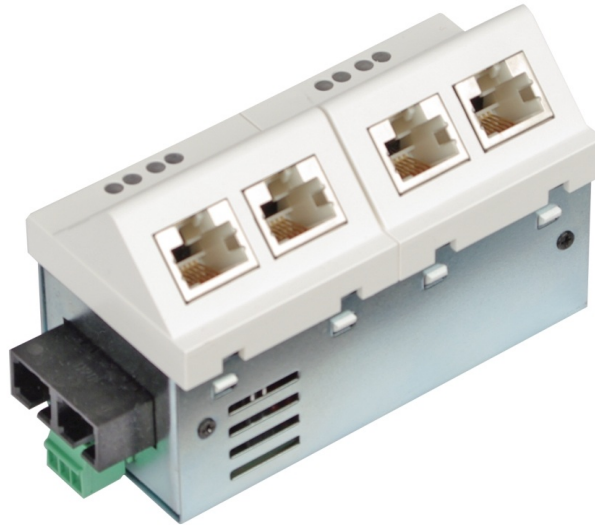


Product Overview

Fast Ethernet Micro Switches (unmanaged)



Description

The MICROSENS Ethernet 4 Port Installations-Switch permits the connection of four terminal devices to a fiber optic segment, via twisted pair cable, according to the IEEE 802.3 standard.

The Switch's integrated logic offers automatic protection of the network.

In the event of failure the defective segment is localized and disconnected from the net. Thanks to the 10/100 MBit/s auto negotiation mode the RJ45 Port adjusts the transfer rate automatically.

With single mode optical fiber its possible to cover distances of up to 40 km.

The use of the MICROSENS miniature switch in the end device is a very economical and perfect for small work groups. The uplink port for the connection to a central distributor is provided a data rate of 100MBit/s and supports half as well as full duplex connections.

The Switch is mounted, enclosed in the universal housing unit, in to the cable channel. Thanks to the rotation technology, patented by MICROSENS, the fiber optic connector can be mounted in 4 positions in the cable channel in order to enable the kink-free connection of the fiber optic cable.

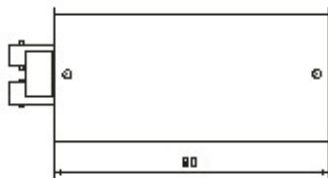
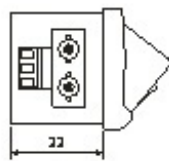
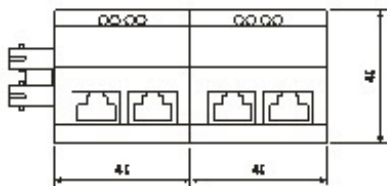
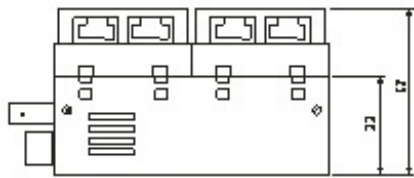
Color coded LEDs show the operating status of the Switch and can be used for error diagnostics.

Properties

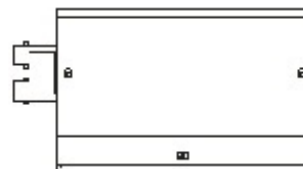
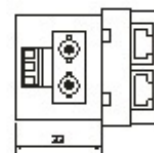
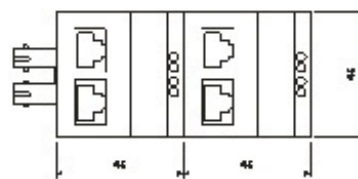
- 5 Port Switch, 4x10/100Base-TX, 1x100Base-FX
- Cost efficient copper/fiber integration
- Vertical/horizontal versions
- Fast, tool-free mounting by snap-in installation
- Integrated power supply with 100 – 240 V AC input

Dimensions

hor. Version



vert. Version



Specifications

General

Type	Fast Ethernet Switch Layer 2+, IEEE 802.3 compliant
Performance	Store-and-forward, Full wire-speed, non-blocking on all ports
MAC-Addresses	2,048 addresses, automatic learning and aging 8 Adressen, automatische Learning und Aging

Uplink (Fixed Optical Transceiver)

Number of Ports	1
Type	Fast Ethernet Multimode: 100Base-FX Single Mode: 100Base-FX
Connector	ST or SC duplex
Fiber Cable Type	Multimode: 50 or 62.5/125 µm fiber Single Mode: 9/125 µm fiber
Distance	Multimode: 550 m Single Mode: 10 km, 20 km (optional) actual distance may depend on fiber performance
Output Optical Power	Multimode 1300nm: -19 dBm Single Mode 1300nm 15 km: -15 dBm
Receiver Sensitivity	Multimode 1300nm: -31 dBm Single Mode 1300nm 15 km: -31 dB
Flow Control	Pause frames (IEEE 802.3x)

Control Panel

Reset Button	Reset of device
---------------------	-----------------

Environment

Operating Temperature	0..40 °C
Storage Temperature	-20..85 °C
Relative Humidity	10..90%, non condensing

Local Ports (Twisted-Pair)

Number of Ports	4
Type	Fast Ethernet, dual speed 10/100Base-TX
Connector	RJ-45 jack, shielded
Cable Type	Twisted-Pair cable, category 5e, impedance 100 Ohm, length max. 100 m
Flow Control	Pause frames (IEEE 802.3x)
Pinout	Auto MDI/MDI-X, auto polarity

Display

Type	Local ports 1 to 4: blinking: activity green: authorized/forwarding orange: blocked red: unauthorized
Status	Switch Status (S) green: device ready Link status uplink (5) blinking: activity green: authorized/forwarding orange: blocked

Power Supply (DC)

Input Voltage	195..265 V AC (230 V AC typ.) 50..60 Hz (50 Hz typ.)
Power Consumption	Typ. 4 W
Connector	3 pin screw clamp, PE/N/
Ground Terminal (PE)	3 pin screw clamp, PE/N/

Standards Compliance

CE Mark	2004/108/EC (EMC) 2006/95/EG (Low Voltage)
Safety	EN 60950-1:2006
Electromagnetic Emission	EN 55022:2006
Electromagnetic Immunity	EN 55024:1998
IEEE (Ethernet)	802.3i 10Base-T 802.3u 100Base-T 802.3x Flow Control

Mechanical

Dimensions	90 mm x 45 mm x 57 mm (l x d x h, without connectors)
Mounting depth	33 mm
Weight	200g
Housing Color	Standard color: pure white (alternative colors on request)

Order Information

Description	Article Number
Horizontal Installation	
5 Port Fast Ethernet Installation switch 45x45, 4x10/100TX with 100BaseFX-Link, integrated power supply, Multimode 1310nm ST connector	MS450230
5 Port Fast Ethernet Installation switch 45x45, 4x10/100TX with 100BaseFX-Link, integrated power supply, Multimode 1310nm SC connector	MS450231
5 Port Fast Ethernet Installation switch 45x45, 4x10/100TX with 100BaseFX-Link, integrated power supply, Single Mode 1310nm ST-connector	MS450232
5 Port Fast Ethernet Installation switch 45x45, 4x10/100TX with 100BaseFX-Link, integrated power supply, Single Mode 1310nm SC-connector	MS450233
Vertical Installation	
5 Port Fast Ethernet Installation switch 45x45, 4x10/100TX with 100BaseFX-Link, integrated power supply, Multimode 1310nm ST connector	MS450240
5 Port Fast Ethernet Installation switch 45x45, 4x10/100TX with 100BaseFX-Link, integrated power supply, Multimode 1310nm SC connector	MS450241

Accessories

Description	Article Number
Universal installation set for E2 mounting boxes consisting of adapter plate and cover frame (pure white)	MS140029
Universal installation kit for cable ducts with C-profile, incl. masking frame	MS140040BR
Ackermann Installation set consisting of socket (165 mm length), device support and 1x 45 mm blind cover Scope of delivery: parts pre-assembled	MS140026
Ackermann Installation set consisting of socket (208 mm length), device support, 1x 45 mm blind cover, 1x socket cover Scope of delivery: parts pre-assembled	MS140027

This document in whole or in part may not be duplicated, reproduced, stored or retransmitted without prior written permission of MICROSENS GmbH & Co. KG. All information in this document is provided 'as is' and subject to change without notice. MICROSENS GmbH & Co. KG disclaims any liability for the correctness, completeness or quality of the information provided, fitness for a particular purpose or consecutive damage. MICROSENS is a trademark of MICROSENS GmbH & Co. KG. Any product names mentioned herein may be trademarks and/or registered trademarks of their respective companies.

© 2018.10.07 MICROSENS GmbH & Co. KG - 59067 Hamm/Germany - Tel. +49 2381 9452-0 - www.microsens.com