



*“ Kinesense provided evidence of offending in the biggest investigation Kent Police has ever embarked on ”*

*Assistant Chief Constable*

**150,000 HOURS SAVED DURING THE INVESTIGATION**

## Video Evidence Search and Analysis

Kinesense LE enables you to import video files (CCTV, Covert, BWC, VMS, etc.), and automatically search for key events. This easy to use but powerful tool allows for time-efficient retrieval, search and reporting from vast amounts of video. All while ensuring the integrity of your evidence and reducing the time and effort required.

□ **Faster actionable intelligence**  
Kinesense LE is a proven video triage tool which uses search algorithms to find key events automatically and eliminate hours of watching video manually. Time savings are typically up to 95%. Please see our numerous case studies for real life examples.

□ **Ensure the chain of evidence and ISO 17025 compliance**  
Keep track of all actions undertaken during the video investigation to automatically create disclosure reports required for chain of evidence, which helps forces to comply with ISO 17025. Accepted by courts, Kinesense is considered a good use of technology.

□ **Easy video editing and storyboarding**  
Bookmark objects and events of interest to quickly compile viewing logs and intelligence reports that can be shared with colleagues during team briefings. Redact witnesses and objects to protect their identity and sensitive information in a matter of seconds. Annotate moving people or objects to highlight key events. Quickly export evidential images and clips to create video storyboards and PowerPoint™ presentations.

□ **Capture to court video case solution**  
Organise all video assets relating to an investigation together, review and report on all case findings easily. Every tool you need for video investigation is included in the Kinesense solution.

## Key Features

### Retrieve

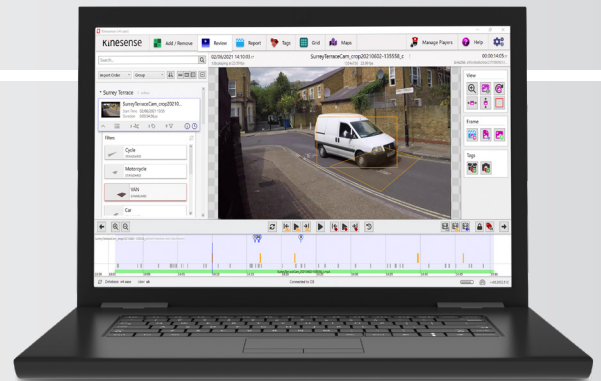
- Supports proprietary CCTV formats
- VMS integrations e.g. Milestone, Genetec, etc
- 900+ virtualized CCTV players
- Batch import of Covidence, Ovation, Timespace and other covert recorders
- Import audio files
- Frame by frame hashing for evidential auditing
- Supports various other proprietary solutions like Ring doorbell.

### Review

- Automatic event detection algorithm
- Search events by object (person/vehicle etc), direction, colour, object and zone
- Search by vehicle type (cars, bikes, trucks, vans, buses, bicycles, etc.)
- Face detection and attribute search (add-on module)
- Face recognition (add-on module)
- Finding faces and license plates for non-static videos
- Person re-identification based on attributes and characteristics
- Bookmark and tag events.

### Report

- Edit and storyboard video clips
- Clarify images and videos using a range of clarification algorithms (deblur, histogram edit, perspective crop, etc.)
- Image authentication
- Redact or highlight images and videos
- Export evidence-grade reports to video, DVD, PDF and MS Word & PowerPoint
- Automate disclosure reports.



## Technical Specifications

Supported Frame Rate	2-30 fps for event detection algorithm
Supported Import Resolution	Minimum QCIF 176 x 144/maximum 4K
Supported Video File Formats	Including but not limited to the following: .avi, .mpeg, .mpeg, .wmv, .mov, .flv, .mkv, .mp4, .vob, .xba, .h264, .asf, .sdr2, .sec, .raw, .dav, .rms, .csx, .264, .ts, .mts 900+ virtualised players to support additional formats
Import Mechanisms	Single/multi file import, analogue digitalisation
Face Detection	Minimum 23 inter pupil pixels/frontal face view
Face Recognition	Minimum 23 inter pupil pixels/ideally 60-100 inter pupil pixel/frontal face view
Language Support	English, French, Italian, Spanish, Polish, Portuguese, Korean, Chinese Simplified, Russian
Minimum Hardware Requirements	Windows 10 *, Intel Core i7 or above, 16 GB RAM, more than 50 GB free hard disk Space
Suggested Hardware Requirements	Windows 10 x64 Pro, Intel Core i9 10th gen. , scoring above 20k on cpubenchmark.net, 32 GB RAM, SSD for Windows, plus 1 TB drive for database storage, 1440p or higher monitor  *For deep learning-based tasks like face detection and license plate detection e.g. Nvidia GeForce GTX 1050 4GB graphics card or above (GPU DirectX12 support).

**Kinesense** offers flexible plans to suit a range of organisation sizes and needs. If you would like actionable intelligence faster, contact us at [info@kinesense-vca.com](mailto:info@kinesense-vca.com) to find out which Kinesense product is right for you.

**SIGN UP FOR A FREE TRIAL**